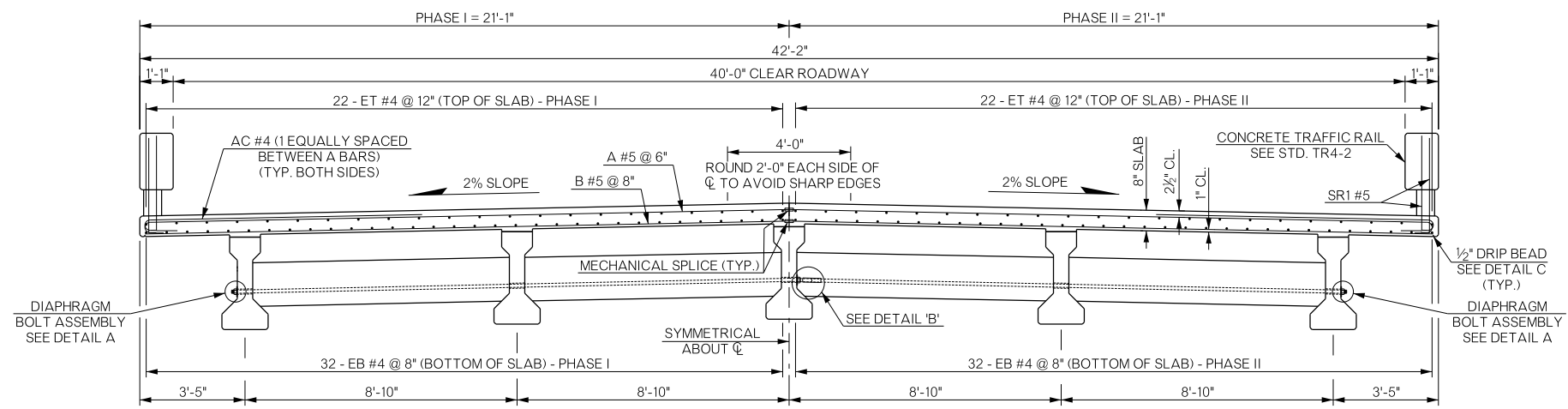
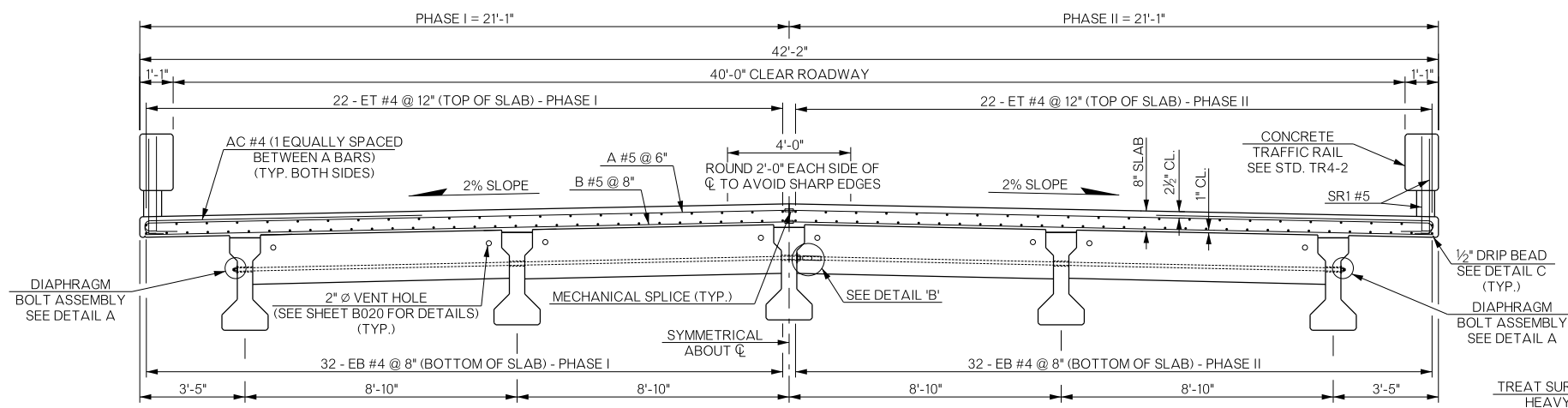


REVISIONS		
REV. NO.	DESCRIPTION	DATE



TYPICAL CROSS SECTION AT INTERMEDIATE DIAPHRAGMS



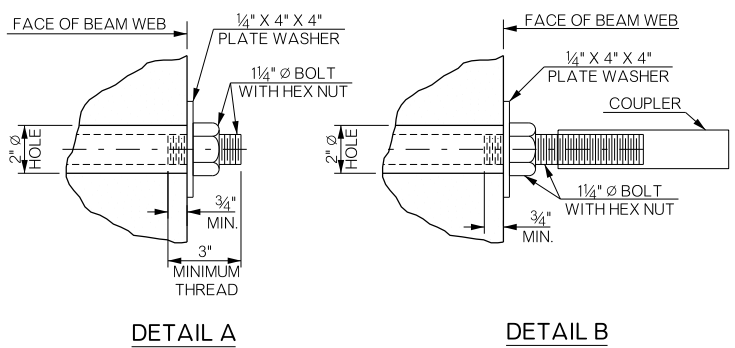
TYPICAL CROSS SECTION AT END DIAPHRAGMS

SUPERSTRUCTURE BAR LIST (PHASE I)				
MARK	SIZE	NO.	FORM	LENGTH
EPOXY COATED REINFORCING				
① A	#5	265	BNT.	21'-6"
AC	#4	262	BNT.	9'-8"
AH1	#4	14	BNT.	3'-1"
AH2	#4	32	BNT.	4'-7"
AS	#4	44	BNT.	5'-0"
① AT	#4	4	STR.	20'-11"
① B	#5	201	STR.	20'-11"
② EB1	#4	32	STR.	97'-5"
EB2	#4	32	STR.	35'-5"
EPH	#4	44	BNT.	3'-1"
① EPT	#4	2	STR.	20'-11"
② ET1	#4	22	STR.	97'-11"
ET2	#4	22	STR.	35'-5"
FPH	#4	19	BNT.	4'-9"
① FPT	#4	2	STR.	18'-0"
F1	#4	36	STR.	8'-0"
F2	#4	48	STR.	7'-6"
F3	#4	24	STR.	8'-0"
U1	#4	60	BNT.	3'-5"
U2	#4	192	BNT.	4'-11"
SR1	#5	284	BNT.	4'-1"

SUPERSTRUCTURE BAR LIST (PHASE II)				
MARK	SIZE	NO.	FORM	LENGTH
EPOXY COATED REINFORCING				
① A	#5	265	BNT.	21'-6"
AC	#4	262	BNT.	9'-8"
AH1	#4	14	BNT.	3'-1"
AH2	#4	32	BNT.	4'-7"
AS	#4	44	BNT.	5'-0"
① AT	#4	4	STR.	20'-11"
① B	#5	201	STR.	20'-11"
② EB1	#4	32	STR.	97'-5"
EB2	#4	32	STR.	35'-5"
EPH	#4	44	BNT.	3'-1"
① EPT	#4	2	STR.	20'-11"
② ET1	#4	22	STR.	97'-11"
ET2	#4	22	STR.	35'-5"
FPH	#4	19	BNT.	4'-9"
① FPT	#4	2	STR.	18'-0"
F1	#4	36	STR.	8'-0"
F2	#4	48	STR.	7'-6"
F3	#4	24	STR.	8'-0"
U1	#4	60	BNT.	3'-5"
U2	#4	192	BNT.	4'-11"
SR1	#5	284	BNT.	4'-1"

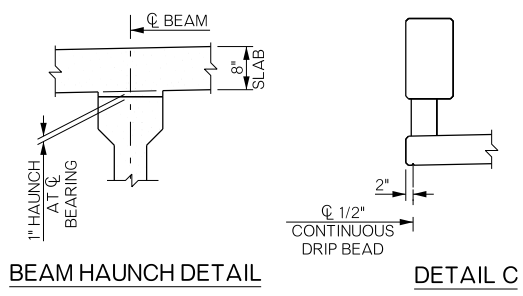
- ① ADD MECHANICAL SPLICE
- ② BARS SHALL BE CONTINUOUS THRU CONSTRUCTION JOINT AT PIER 1. DO NOT LAP WITHIN 10' OF CENTERLINE OF PIER 1. LENGTH INCLUDES ONE 2'-0" LAP; STAGGER LAP

SUPERSTRUCTURE QUANTITIES				
ITEM	UNIT	PHASE I	PHASE II	TOTAL
PRESTRESSED CONCRETE BEAMS (TYPE II)	L.F.	387.00	258.00	645.00
SAW CUT GROOVING	S.Y.	292.60	292.60	585.20
SEALED EXPANSION JOINTS	L.F.	21.60	21.60	43.20
CONCRETE TRAFFIC RAIL (TR-4)	L.F.	131.70	131.70	263.40
STRUCTURAL STEEL	L.B.	710.00	710.00	1,420.00
STAINLESS STEEL FIXED BEARING ASSEMBLY	EA.	6.00	4.00	10.00
STAINLESS STEEL EXPANSION BEARING ASSEMBLY	EA.	12.00	8.00	20.00
CLASS 'AA' CONCRETE	C.Y.	76.70	76.70	153.40
MECHANICAL SPLICE	EA.	474.00	0.00	474.00
EPOXY COATED REINFORCING STEEL	LB.	19,890.00	19,890.00	39,780.00
WATER REPELLANT (VISUALLY INSPECTED)	S.Y.	186.00	186.00	372.00
SEALER CRACK PREPARATION	L.F.	20.40	152.10	172.5
SEALER RESIN	GAL.	0.25	1.95	2.20



DETAIL A

DETAIL B



BEAM HAUNCH DETAIL

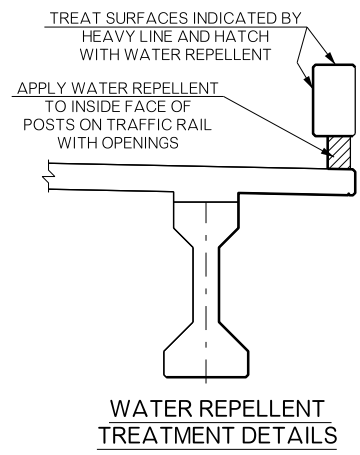
DETAIL C

**DECK SLAB NOTES**

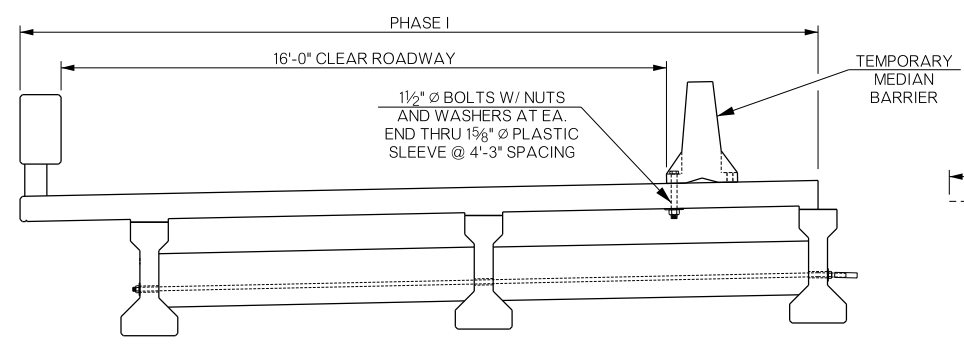
IN THE EVENT OF AN EMERGENCY, HALT THE PLACEMENT OF CONCRETE BY FORMING A CONSTRUCTION JOINT MADE PERPENDICULAR TO THE DIRECTION OF TRAFFIC OR AS DIRECTED BY THE ENGINEER. DO NOT PLACE ANY HEAVY EQUIPMENT ON THE FINISHED DECK SLAB WITHIN 5' OF ANY CONSTRUCTION JOINT UNTIL CONCRETE IS IN PLACE ON BOTH SIDES OF THE RESPECTIVE JOINT AND AT LEAST 48 HOURS HAS ELAPSED SINCE CONCRETE PLACEMENT. SEAL ALL DECK SLAB CONSTRUCTION JOINTS WITH HIGH MOLECULAR WEIGHT METHACRYLATE IN ACCORDANCE WITH SECTION 523 OF THE SPECIFICATIONS. INCLUDE ALL COST OF EQUIPMENT AND LABOR FOR THE INSTALLATION OF THE HIGH MOLECULAR WEIGHT METHACRYLATE SEALER IN THE CONTRACT UNIT PRICE OF "SEALER CRACK PREPARATION". INCLUDE ALL COST OF THE HIGH MOLECULAR WEIGHT METHACRYLATE SEALER IN THE CONTRACT UNIT PRICE OF "SEALER RESIN". THE DEPARTMENT WILL NOT MEASURE THE PREPARATION AND SEALER OF EMERGENCY CONSTRUCTION JOINTS FOR PAYMENT.

**DIAPHRAGM BOLT NOTES**

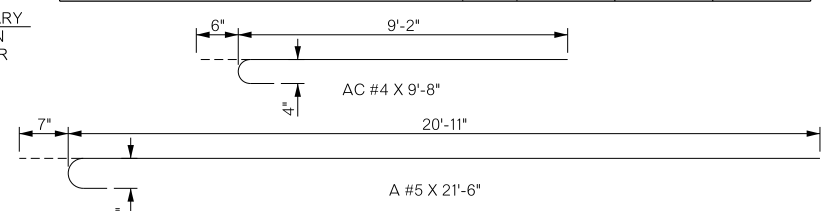
PROVIDE STRUCTURAL STEEL FOR DIAPHRAGM BOLTS AND PLATE WASHERS IN ACCORDANCE WITH AASHTO M270 (ASTM A709), GRADE 50W (WEATHERING STEEL, CHARPY V-NOTCH TESTING NOT REQUIRED). THE CONTRACTOR MAY SUBSTITUTE A #10 REINFORCING BAR IN ACCORDANCE WITH AASHTO M31, GRADE 60, AND THREADED AT THE ENDS AS SHOWN FOR THE DIAPHRAGM BOLT AT NO ADDITIONAL COST TO THE DEPARTMENT. PROVIDE HEX NUTS IN ACCORDANCE WITH AASHTO M291 (ASTM A563). PAINT EXPOSED DIAPHRAGM BOLT, PLATE WASHER AND HEX NUT WITH TWO (2) COATS OF ZINC-RICH PAINT (6 MIL MINIMUM THICKNESS) AFTER ASSEMBLY. INCLUDE ALL COST OF DIAPHRAGM BOLT, PLATE WASHER AND HEX NUT IN THE CONTRACT UNIT PRICE FOR STRUCTURAL STEEL.



WATER REPELLANT TREATMENT DETAILS



TEMPORARY MEDIAN BARRIER PLACEMENT DETAIL



BRIDGE "B" OVER SNAKE CREEK		COMANCHE COUNTY	
U.S.-277		DESIGN	MLC 07/16
DETAILS OF SUPERSTRUCTURE (SHEET 1 OF 6)		DETAIL	VNT 07/16
		CHECK	DAH 04/17
		SQUAD: HARJO	
		ENGR: MOLLA-ESMAIL	
STATE OF OKLAHOMA		DEPARTMENT OF TRANSPORTATION	
JOB/PIECE NO. 27968(04)		SHEET NO. B018	